

**National Informatics Centre,
Chhattisgarh State Centre**

Windows Update & Patch Management

These guidelines are for the systems connected to local LAN / RF link of NIC from Mantralaya, Raipur. Please follow the below mentioned steps to activate the Windows Update and patch management from local NIC Server that gets updated daily.

Step 1. Login to site <http://cg.nic.in/network> to get a page indicating a link “Windows Update & Patch Management”. Under this you will find two files to be downloaded.

Step 2 : Download the file “Patch management using software update services 1.0 sp1.msi” from here and save it to your system desktop.

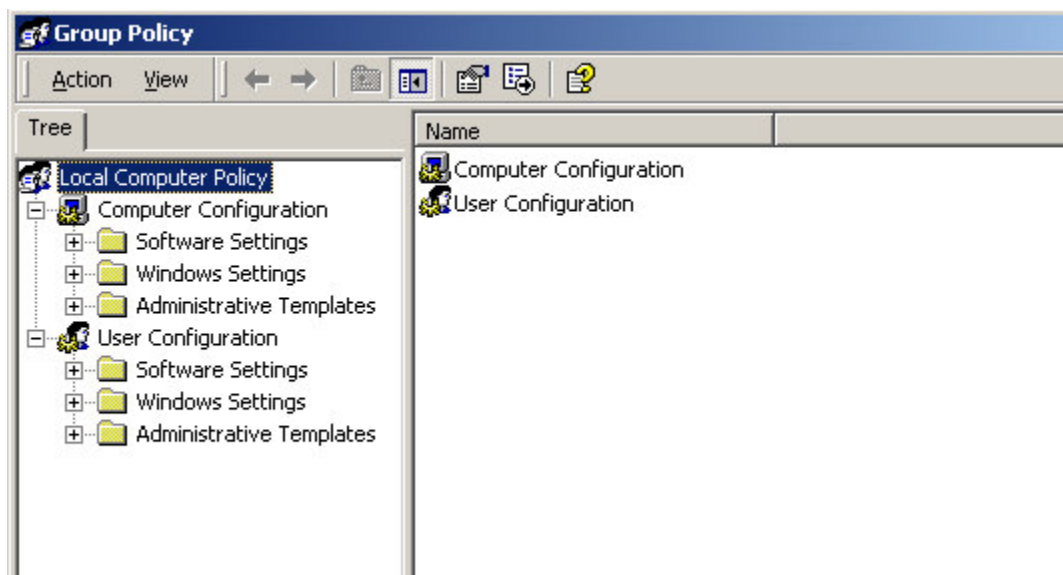
Step 3 : Now install the above downloaded file from the location you had just saved by executing it.

Step 4: Download the file “wuau.adm” and save it in your computer desktop.

Step 5: After installing the above said files go to

“Start” menu in task bar --> select “run”

A small box appears and in the box type “gpedit.msc” and click “ok”. Then a new window of Group Policy appears as below.



Step 6: Select “Computer configuration” then click “Administrative templates”.

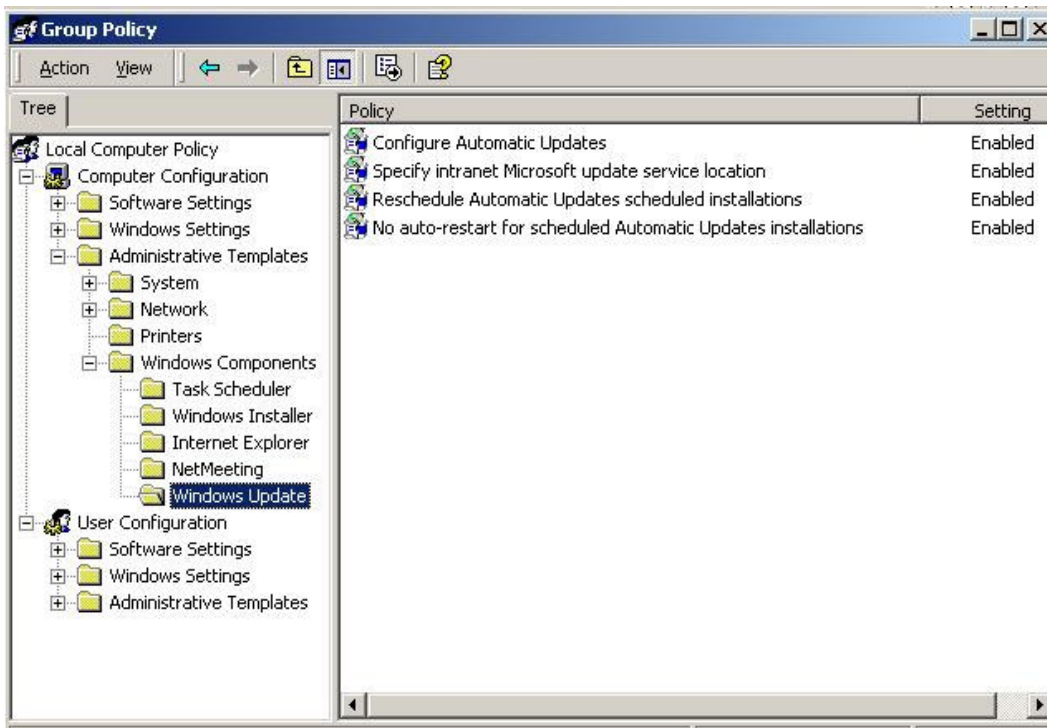
Step 7 : Now click at **“action”** in menu bar at top of the window and select **“Add/remove templates”** .

A window will open, click on **“Add..”** button and then this window opens another window and here browse to the place where you have downloaded the file **“wuau.adm”** (in desktop) and click to open.

The template will be added to the previous **“Add/Remove templates..”** and then close the window by clicking at **“close”** in this window.

Step 8: Now go to

Computer configuration -->Administrative templates --> windows components --> windows update as below

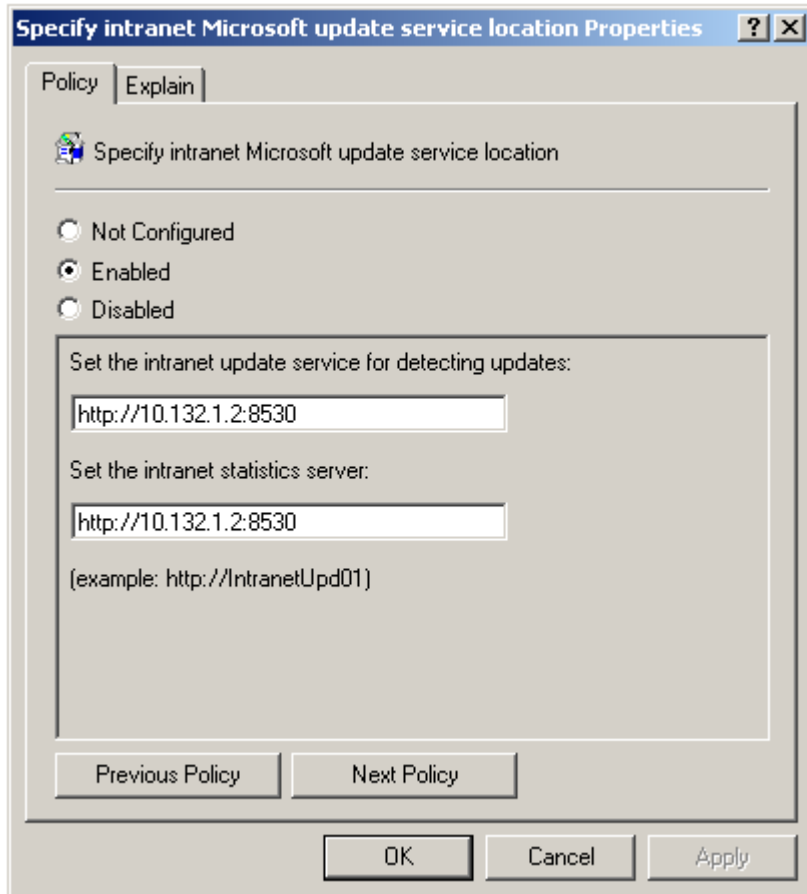


In right side of the window Double click on **“configure automatic updates”** and choose option **“Enable”** by clicking and select **“3-Auto download and notify for install”** in **“configure automatic updating”** option.

Under **“Scheduled install day”**, select **“0-every day”** from the options.

Choose time (working day hours) according to your convenience for **“scheduled install time”**.

Click on “Next policy” or “Next Settings” button and in this window also select “Enabled” option. In this window, in both the text boxes given below type “<http://10.132.1.2:8530>”. and click on “next policy” or “next setting” button and choose “Enabled” option as below



Repeat choosing “Enabled” for all the policies by clicking on the “next policy” or “next setting” button.

Click on “Apply” at the end where there is no next policy then click “OK”

Step 9 : Restart your computer.

Step 10 :

After the specific time set in configurations earlier in your computer you will get updates from NIC SUS (Software Update Server) and you can see a

Windows update icon in your system tray(on the right side of task bar) with a message “updates are ready to install”.

Double click on the windows update icon and click “Install”.

Your computer will fetch updates daily from NIC server. Whenever updates are ready to install, windows update icon appears with message and you have to install updates.

For any problem or query please contact Network Division, NIC CGSC, Mantralaya, Raipur. Phone: 5080241, 2221263/5080976 Ext-115.